



## FEATURES/BENEFITS

- **Self-contained DC-DC Converter:** Fully Functional; Needs No Additional External Capacitors or Components
- **6 Sided Metal Case:** Shields Against Radiated Emissions and Susceptibility
- **Internal Multi-mode EMI Filter:** Limits Conducted Emissions to MIL-STD-461F Requirements
- **250kHz Current Mode Flyback Topology:** Fully Regulated Output With Low Ripple and Fast Transient Response Time
- **On-Off Control Function:** Simple Logic Level Input Inhibits Output
- **Output Voltage Adjust Function:** User Adjustable Vout in +/- 10% Increments Via External Resistor (Main Output)
- **Output Voltage Selection:** Other Output Voltages/Combinations May Be Specified; Consult Factory
- **Short Circuit Limited:** Protected Against Output Overloads and Short Circuits
- **Fully Isolated:** Inputs to Outputs and Case 500VDC, Outputs to Case 100VDC
- **Transients Tolerant:** Works Through 80V Input Transients MIL-STD-704A
- **Compact, Encapsulated Construction:** Small Footprint with Long Life and Reliable Operation in Severe Operational Environments
- **Two Grades Available:** Economical, Effective Tailoring to Applications Requirements

# 370

**MODEL: 370 28VDC**  
**INPUT RANGE : 16-80VDC**

## SELECT ANY COMBINATION OF OUTPUTS A, B AND C

### OUTPUT A

PARAMETER	CONDITION	UNITS	OUTPUTS				
Vout	Setpoint +/- 2%	DC Volts	3.3	5.0	7.5	12	15
Iout	Vin min-max	Amperes	3.3	2.00	1.33	0.8	0.67
Efficiency	Rated Load	Percent Min	75	75	76	78	78
Line Reg	Vin min-max	mV max	40	40	50	50	75
Load Reg	10% to Rated Load	mV max	50	50	100	120	150
Vout Ripple	Rated Load, 20MHz BW	mVpp max	100	100	120	150	220

### OUTPUT B

PARAMETER	CONDITION	UNITS	OUTPUTS							
Vout	Setpoint +/- 2%	DC Volts	0.8	1.0	1.2	1.5	1.8	2.0	2.5	3.3
Iout	Vin min-max	Amperes	2.00	2.00	2.00	2.00	2.00	2.00	2.00	1.67

### OUTPUT C

PARAMETER	CONDITION	UNITS	OUTPUTS							
Vout	Setpoint +/- 2%	DC Volts	0.8	1.0	1.2	1.5	1.8	2.0	2.5	3.3
Iout	Vin min-max	Amperes	2.00	2.00	2.00	2.00	2.00	2.00	2.00	1.67

28VDC INPUT DC-DC CONVERTERS

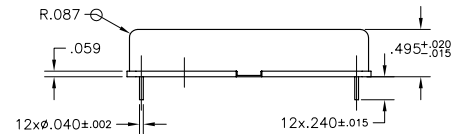
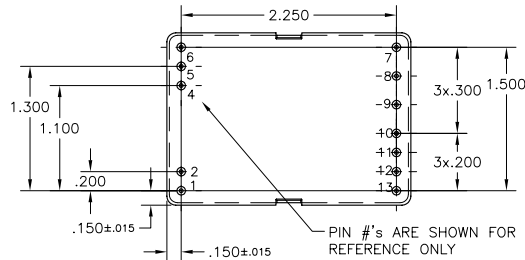
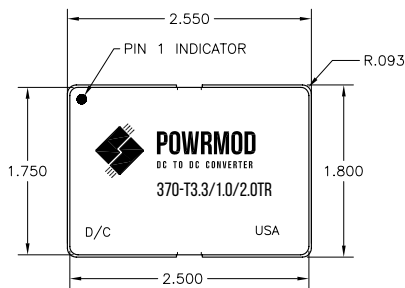


## MECHANICAL SPECIFICATIONS

Size	2.55 L x 1.80 W x .495 H inch
Enclosure	Full metal, CRS
Construction	Encapsulated sealed
Pins	.040 alloy
Weight	65g typical
Mounting	Thru-Hole PWB (TH) or Chassis (CH) mount, any orientation provided baseplate is heatsunk

# 370

MODEL: 370 28VDC  
INPUT RANGE : 16-80VDC



## PIN FUNCTIONS

	1	2	3	4	5	6	7	8	9	10	11	12	13
Function for Triple Outputs	On-Off Control	Vout Adj	NU	Case	Vin Rtn	Vin +	Output A	Output A Rtn	Output B	Output B Rtn	Output C	Output C Rtn	Case

DATA 25°C BASEPLATE PRODUCTS AND SPECIFICATIONS ARE SUBJECT TO CHANGE WITHOUT NOTICE.

## PART NUMBERING CONSTRUCTION KEY SELECT ANY COMBINATION OF OUTPUTS A, B AND C

MODEL	OUTPUT TYPE & VOLTAGE	ENCLOSURE	GRADE
370	OUTPUT A OUTPUT B OUTPUT C	MOUNTING	GRADE LEVEL
	T3.3 /0.8 /0.8	T = THRU HOLE	C = COMMERCIAL
	T5.0 /1.0 /1.0	C = CHASSIS	R = RUGGED
	T7.5 /1.2 /1.2		
	T12 /1.5 /1.5		
	T15 /1.8 /1.8		
	/2.0 /2.0		
	/2.5 /2.5		
	/3.3 /3.3		

EXAMPLE: 370-T3.3/1.0/2.0TR